

TSX-V: STRM



STORM
EXPLORATION

Canadian High-Grade Gold Exploration

Q2/2025

Forward Looking Statements

This presentation may contain “forward-looking statements.” These forward-looking statements are made as of the date of the PowerPoint presentation and Storm Exploration Inc. (“Storm” or the “Company”) does not intend, and does not assume any obligation, to update these forward-looking statements. Forward-looking statements include, but are not limited to, statements with respect to the timing and amount of estimated future exploration, success of exploration activities, expenditures and requirements for additional capital.

Forward-looking statements involve known and unknown risks, uncertainties and other factors which may cause the actual results, performance or achievements of the Company to be materially different from any future results, performance or achievements expressed or implied by the forward-looking statements. Such factors include, among others, risks related to actual results of current exploration activities; changes in project parameters as plans continue to be refined; the ability to enter into joint ventures or to acquire or dispose of property interests; future prices of mineral resources; accidents, labour disputes and other risks of the mining industry; ability to obtain financing; and delays in obtaining governmental approvals or financing.

Unless otherwise indicated, Bruce Counts, P.Geol, President, CEO, & Director of Storm Exploration Inc. and a Qualified Person under National Instrument 43-101, has reviewed and is responsible for the technical information contained in this presentation.



The Value Proposition

The right ingredients for significant value creation

- ✓ 4 District Scale Projects in NW Ontario
- ✓ First Nations agreements in place for all projects
- ✓ 3 Projects with confirmed gold endowment
- ✓ High-grade gold targets ready for drilling
- ✓ Experienced technical & capital markets team
- ✓ Attractive market capitalization: \$4.9M



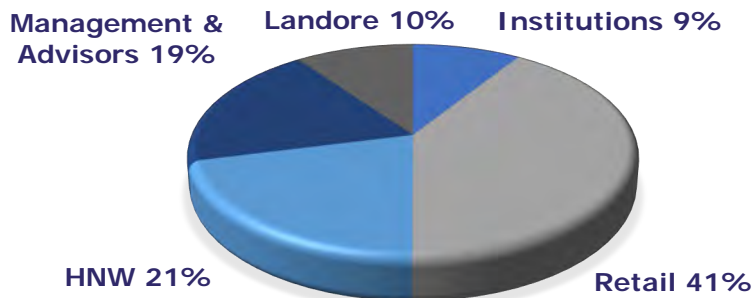
Corporate Structure



SHARE STRUCTURE

Issued & Outstanding	75.8M
Warrants (w.a. \$0.12)	15.8M
Options (w.a. \$0.32)	6.1M
Share Price	\$0.075
Market Capitalization	\$5.7M

MAJOR SHAREHOLDERS



Sprott



U.S. Global Investors

Corporate Social Responsibility

Good corporate governance is critical to success. Storm seeks to foster investor, stakeholder and rights-holder confidence by adopting policies that ensure the highest level of corporate integrity and business ethics.

First Nations

Storm has signed Exploration Agreements with all First Nations in whose traditional territory it explores. We strongly believe that the participation of First Nations is essential to the success of any project.

This philosophy is reflected in a statement by Solomon Atlookan, Chief of the Eabametoong First Nation (EFN):

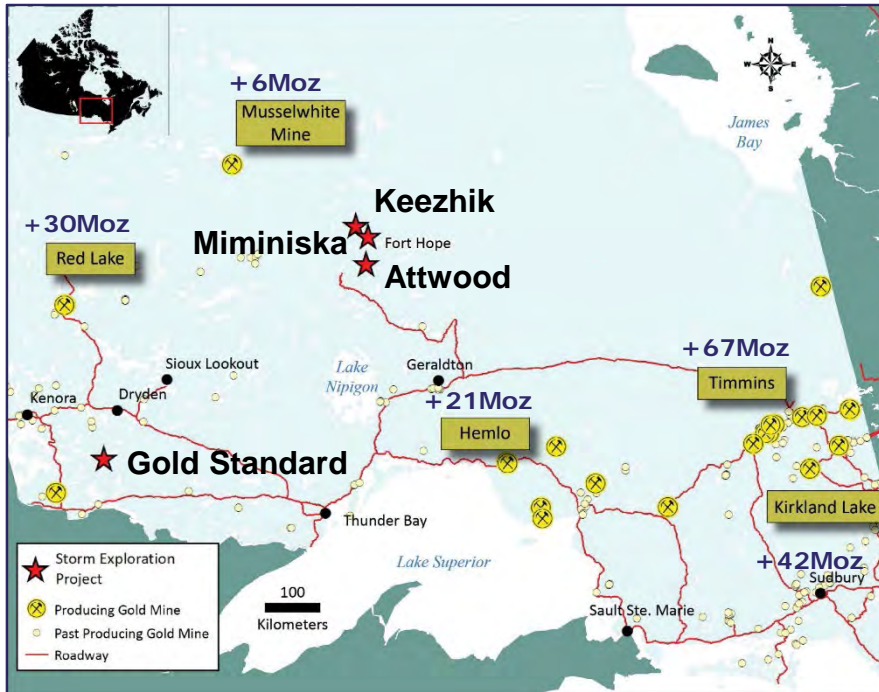
“For far too long, exploration companies have sought to obtain permits before working collaboratively with First Nations. This agreement recognizes the role of our community in permitting, monitoring, and regulating any activities on the land. Storm has been very respectful in working with EFN and this approach should be a model for others to follow.”



District Scale Projects in a Proven Jurisdiction



Home to +200Moz of gold production



Fort Hope Projects

- Geology with the potential to host a major gold camp
- Numerous drill-confirmed high-grade gold occurrences
- Targeting banded iron formation (“BIF”) hosted gold deposits similar to the Musselwhite Mine

Gold Standard

- High-grade gold and base metal potential
- Road accessible

BIF Hosted Gold Deposits

Why are BIF hosted gold deposits attractive?

- Multimillion ounce potential
- High-grade / high-margin deposits
- Simple metallurgy
- Consistent grades

Notable BIF Hosted Gold Deposits

Deposit	Size	Avg. Grade
Homestake (DC)	+42Moz	8.4g/t
Meliadine (AEM)	+10Moz	7.1g/t
Back River (BTO)	+9Moz	6.0g/t
Musselwhite (OLA)	+6Moz	5.3g/t
Miminiska	?	?





Fort Hope Gold Projects

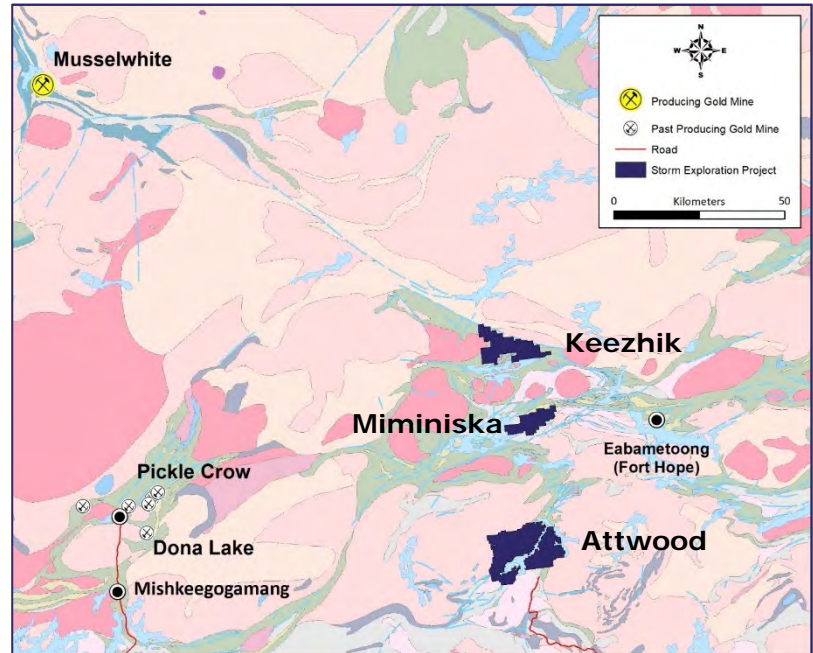
District Scale Potential in the Miminiska-Fort Hope Greenstone Belt

Acquiring 100% of the 2 most advanced projects in the belt:

- **Miminiska** – high-grade gold in BIF
- **Keezhik** – numerous drill-confirmed high-grade gold discoveries

100% ownership of **Attwood** Project with gold and base metal potential

In Q4/2024 Orla Mining purchased the 2M oz **Musselwhite** BIF Gold Mine from Newmont for **\$850M**



Miminiska Project



Fertile for BIF hosted gold deposits

Prospective Ground

Two high-grade gold targets:

Miminiska & Frond

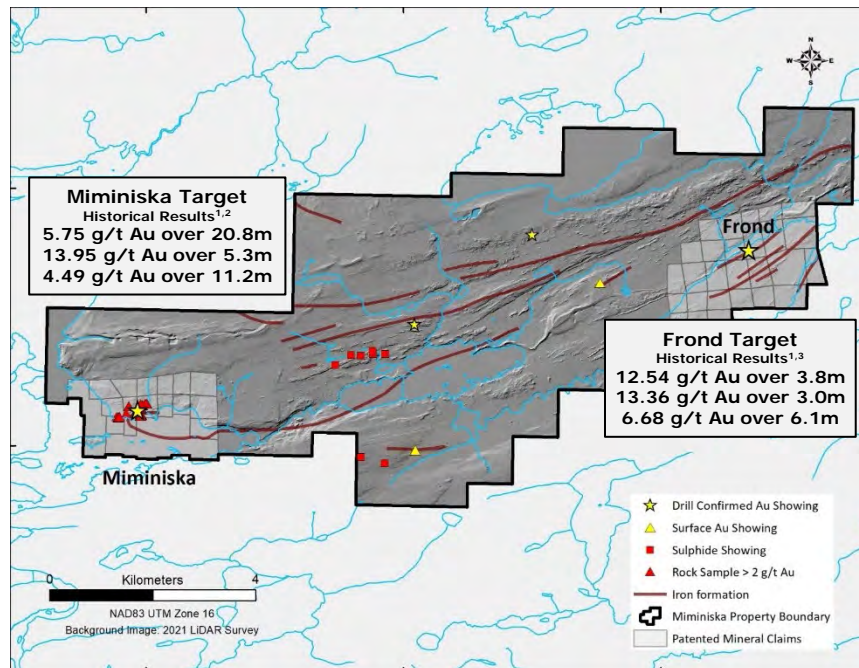
Numerous surface gold showings

Limited exploration

Extensive un-tested BIF

Next Steps

3,000m of drilling at Miminiska
target to grow gold inventory



¹ Historical results have not been independently verified by Storm Exploration; and, there is no guarantee that the Company can reproduce the results in whole or in part. Potential investors should not rely on these historical results when making an investment decision

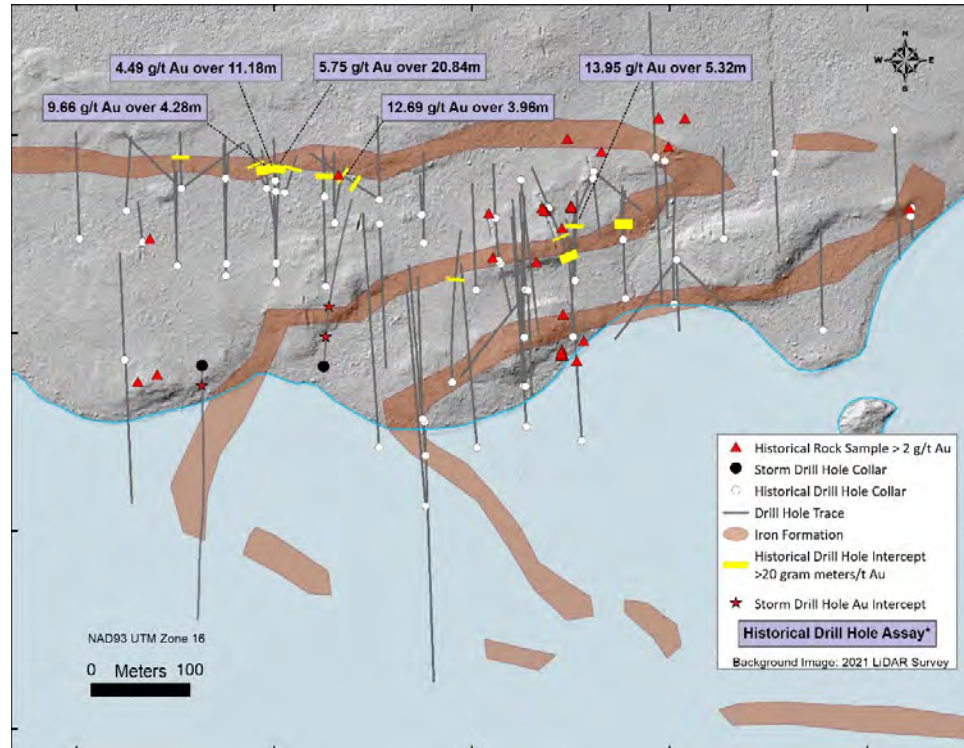
² Technical Report on the Miminiska Lake Project: 2004-2005, B.J. McKay, P.Geol., 28-April-2005, Volume I

³ Geological Investigations Frond Lake Property., David S. Hunt B.Sc. P.Geol., February 2003, Appendix 1



Miminiska Target

Historical Work Provides a Solid Foundation



Proven Gold Endowment

13,337m of historical drilling: 1944 to 2005

Historical resource estimate of 82koz Au @ 3.16*

Primed for rapid expansion of the gold mineralization

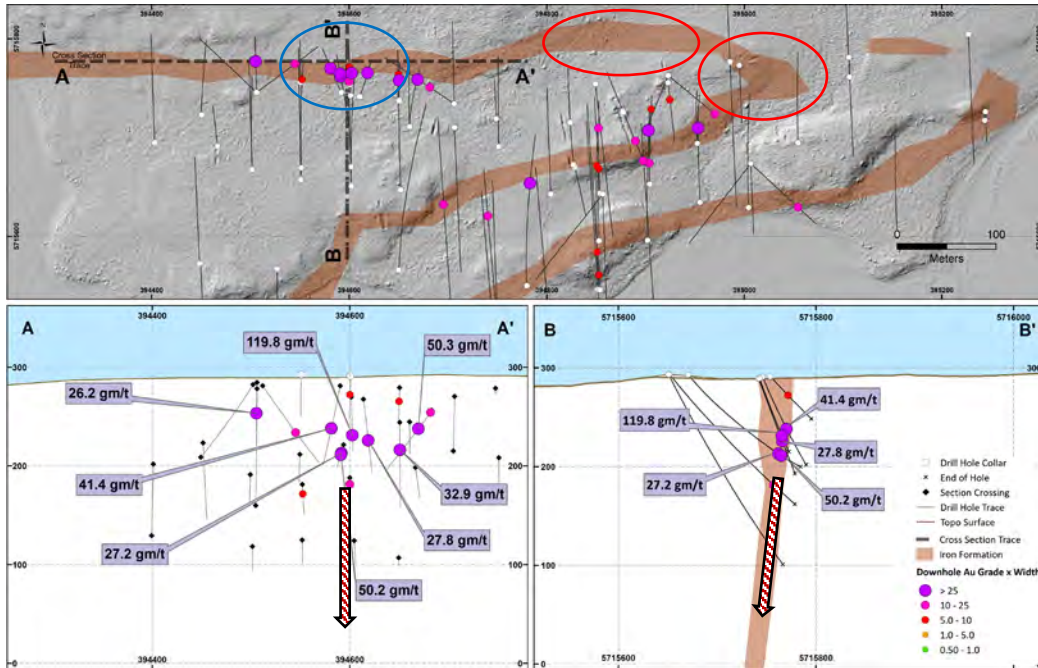
* This historical mineral resource estimate is not compliant with the reporting requirements under NI 43-101.

Storm is not treating the historical estimate as current mineral resources (as defined in NI 43-101) and thus the historical estimate should not be relied upon.



Miminiska Target

Growing the Gold Inventory



Next Steps

3,000m of drilling to expand gold mineralization along strike and down dip

Drill Ready Target

Known gold zones ready for vertical expansion ○

Excellent potential to extend mineralization along strike ○

- Historical gold-bearing surface samples
- Fold nose untested

Experienced Leadership

Management & Directors

Bruce Counts, <i>PGeo</i> :	President, CEO & Director
Taylor Niezen, <i>B.Comm.</i> :	CFO & Corporate Secretary
Rob L'Heurux, <i>P.Geo</i> :	Independent Director
Michael Sweatman, <i>CPA</i> :	Independent Director
Joanne Price <i>PGeo</i> :	Independent Director

Advisors

John Williamson:	Capital Markets Advisor
Cameron Dorsey:	Technical Advisor
Chief Harvey Yesno:	First Nations Advisor
Allison Rippin-Armstrong:	ESG Advisor



Key Reasons to Invest

- ✓ Storm is exploring for multi-million-ounce gold deposits in NW Ontario
- ✓ Agreements with First Nations in place for all projects
- ✓ Projects with extensive gold showings: drill-confirmed and high-grade
- ✓ Clear path to adding value in the near-term
- ✓ Attractive market capitalization \$4.9M
- ✓ Management & Advisors have a track record of creating value through discovery



TSX-V: STRM



STORM
EXPLORATION

Additional Projects

Q2/2025

Keezhik



Multi-million Ounce Discovery Potential

Numerous high-grade Au prospects

Limited exploration since 1980's

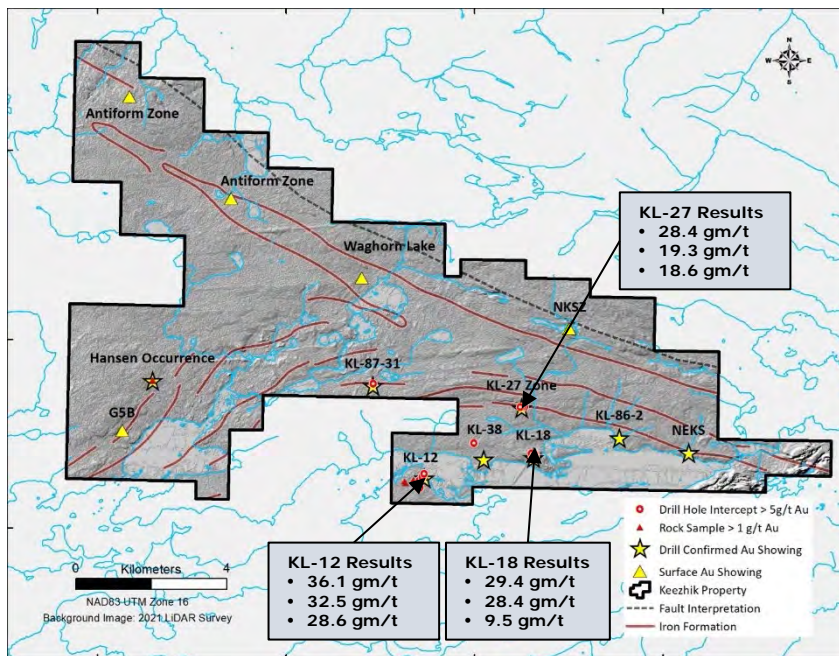
Work Completed

- ✓ Airborne Mag & LiDAR surveys
- ✓ Geochemical sampling

Next Steps

Airborne EM survey

Geological Mapping & Soil Sampling



* Historical results have not been independently verified by Storm Exploration; and, there is no guarantee that the Company can reproduce the results in whole or in part. Investors should not rely on these historical results when making an investment decision



Attwood

Grassroots Property with Precious and Base Metal Potential

Prospective Ground

100% owned project

No Royalty

No exploration since 1970's

Less than 20 historical drill holes

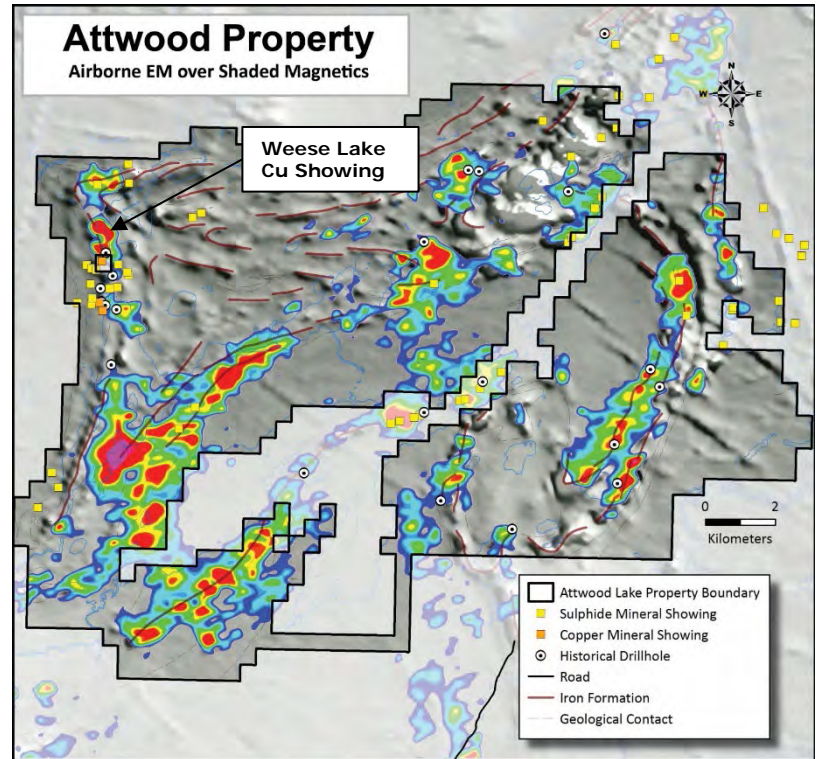
Within 5km of all-weather road

Work Completed

✓ Airborne Mag & LiDAR surveys

Next Steps

Geological Mapping & Soil Sampling





Gold Standard Property

100% Owned Early-Stage Property with a History of High-Grade Gold Production

Worked by the Old Timers

Historical gold mining: 1900 - 1903

Reported mine grades of >50 g/t Au

Base metal exploration 1969 - 1971

The Gold Opportunity

Three historical small-scale mines underscore prospectivity

Area of gold mining never drilled

The Base Metal Opportunity

Extensive conductivity anomaly suggests large VMS system

Cu/Zn mineralization noted in historical drill-hole never assayed

Road accessible



Gold Standard Property



Early-Stage Property with a History of High-Grade Gold Production

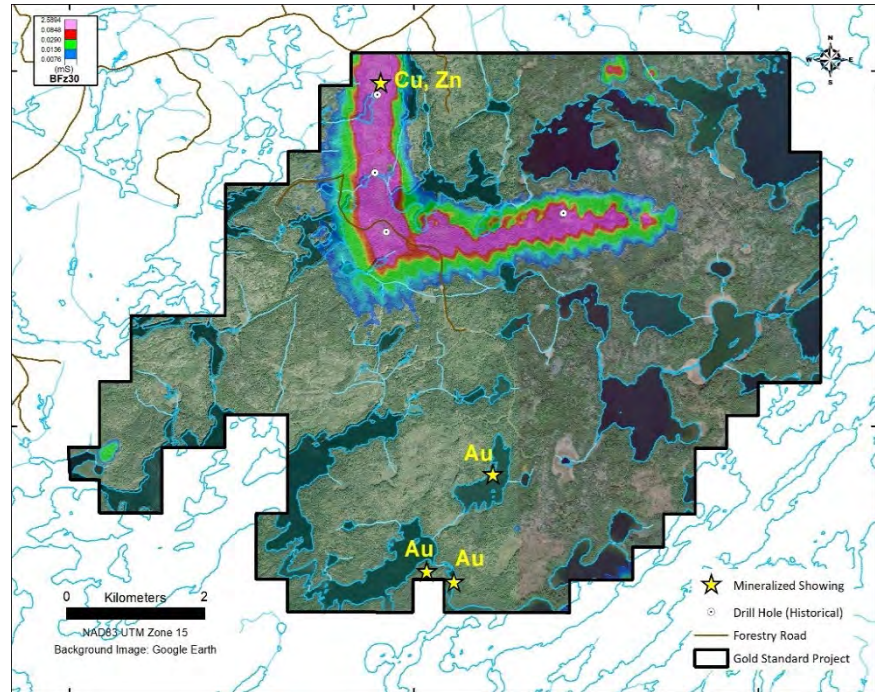
Work Completed

- ✓ Assays up to **166 g/t Au** from grab samples collected from historical workings
- ✓ Geochemical samples collected over historical gold workings
- ✓ Detailed airborne EM survey completed over property
- ✓ MOU signed with Naicatchewenin & Nigigoonsiminikaaning First Nations

Next Steps

Ground geophysical surveys

Geological mapping & soil sampling





STORM
EXPLORATION

info@stormex.ca

+1 (604) 506-2804

Stormex.ca

TSX-V: STRM