

TSX-V: STRM



**STORM**  
EXPLORATION

**Canadian High-Grade Gold Exploration**

Q1/2025

# Forward Looking Statements

This presentation may contain “forward-looking statements.” These forward-looking statements are made as of the date of the PowerPoint presentation and Storm Exploration Inc. (“Storm” or the “Company”) does not intend, and does not assume any obligation, to update these forward-looking statements. Forward-looking statements include, but are not limited to, statements with respect to the timing and amount of estimated future exploration, success of exploration activities, expenditures and requirements for additional capital.

Forward-looking statements involve known and unknown risks, uncertainties and other factors which may cause the actual results, performance or achievements of the Company to be materially different from any future results, performance or achievements expressed or implied by the forward-looking statements. Such factors include, among others, risks related to actual results of current exploration activities; changes in project parameters as plans continue to be refined; the ability to enter into joint ventures or to acquire or dispose of property interests; future prices of mineral resources; accidents, labour disputes and other risks of the mining industry; ability to obtain financing; and delays in obtaining governmental approvals or financing.

Unless otherwise indicated, Bruce Counts, P.Geol, President, CEO, & Director of Storm Exploration Inc. and a Qualified Person under National Instrument 43-101, has reviewed and is responsible for the technical information contained in this presentation.



# The Value Proposition

## *The right ingredients for significant value creation*

- ✓ 4 District Scale Projects in NW Ontario
- ✓ 3 Projects with confirmed gold endowment
- ✓ High-grade gold targets ready for drilling
- ✓ Experienced technical & capital markets team
- ✓ Notable shareholders
- ✓ Attractive market capitalization: \$2.6



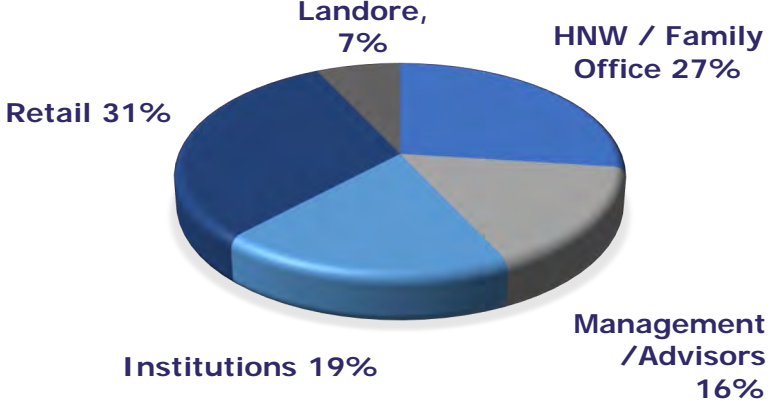


# Corporate Structure

## SHARE STRUCTURE

Shares Outstanding	64.9M
Warrants (w.a. \$0.12)	15.8M
Options (w.a. \$0.32)	4.2M
Share Price	\$.04
Market Cap	\$2.6M

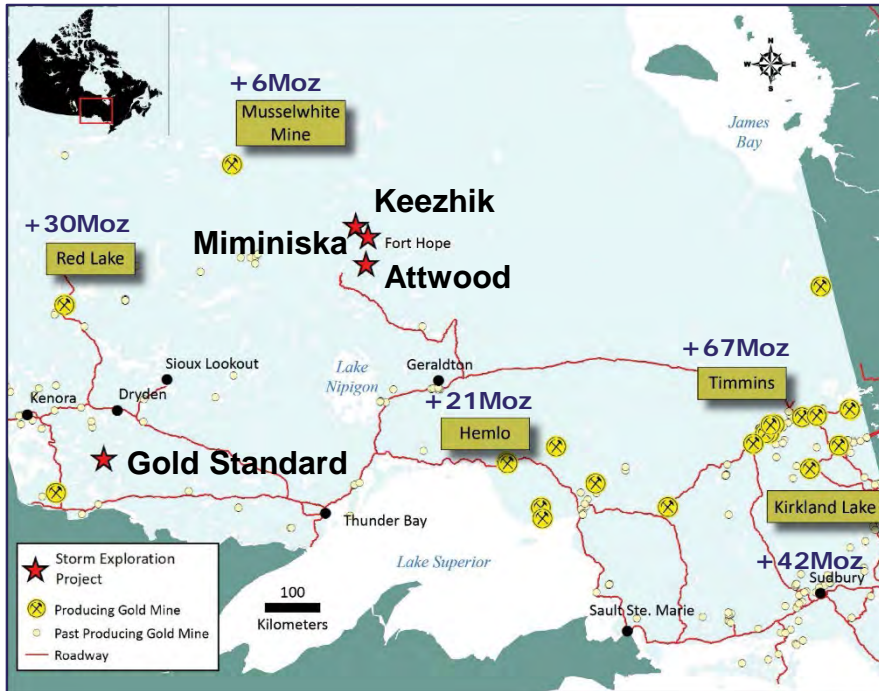
## MAJOR SHAREHOLDERS



# District Scale Projects in a Proven Jurisdiction



Home to +200Moz of gold production



## Fort Hope Projects

- Geology with the potential to host a major gold camp
- Numerous drill-confirmed high-grade gold occurrences
- Targeting banded iron formation (“BIF”) hosted gold deposits similar to the Musselwhite Mine

## Gold Standard

- High-grade gold and base metal potential
- Road accessible

# BIF Hosted Gold Deposits

## What makes BIF hosted gold deposits attractive?

Multimillion ounce potential

High-grade / high-margin deposits

## Notable BIF Hosted Gold Deposits

Deposit	Size	Avg. Grade
Homestake	+42Moz	8.4g/t
Meliadine	+10Moz	7.1g/t
Back River	+9Moz	6.0g/t
Musselwhite	+6Moz	5.3g/t
Lupin	+3Moz	9.1g/t
Pickle Crow	+1Moz	16.1g/t





# Fort Hope Gold Projects

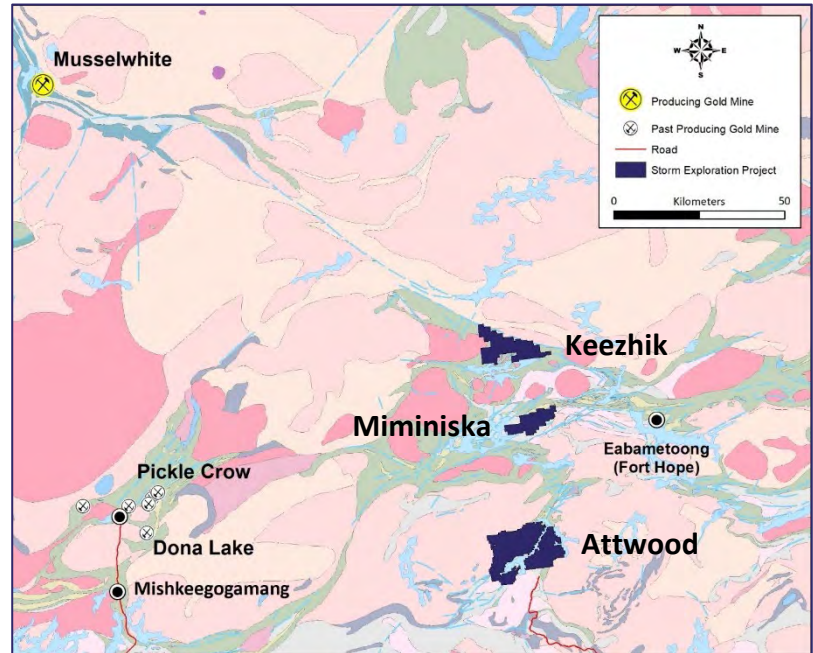
## District Scale Potential in the Miminiska-Fort Hope Greenstone Belt

Acquiring 100% of the 2 most advanced projects in the belt:

- **Miminiska** – high-grade gold in BIF
- **Keezhik** – numerous drill-confirmed high-grade gold discoveries

100% ownership of **Attwood** Project with gold and base metal potential

In Q4/2024 Orla Mining purchased the 2M oz **Musselwhite** BIF Gold Mine from Newmont for **\$850M**



# Miminiska Project



## Fertile for BIF hosted gold deposits

### Prospective Ground

Two high-grade gold targets:

Miminiska & Frond

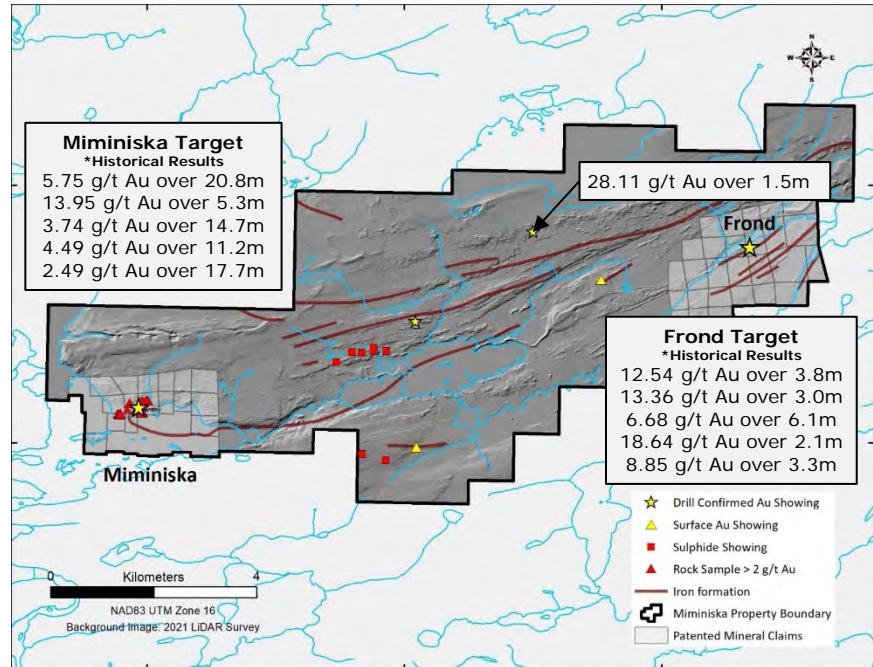
Numerous surface gold showings

Limited exploration

Extensive un-tested BIF

### Next Steps

3,000m of drilling at Miminiska target to grow gold inventory



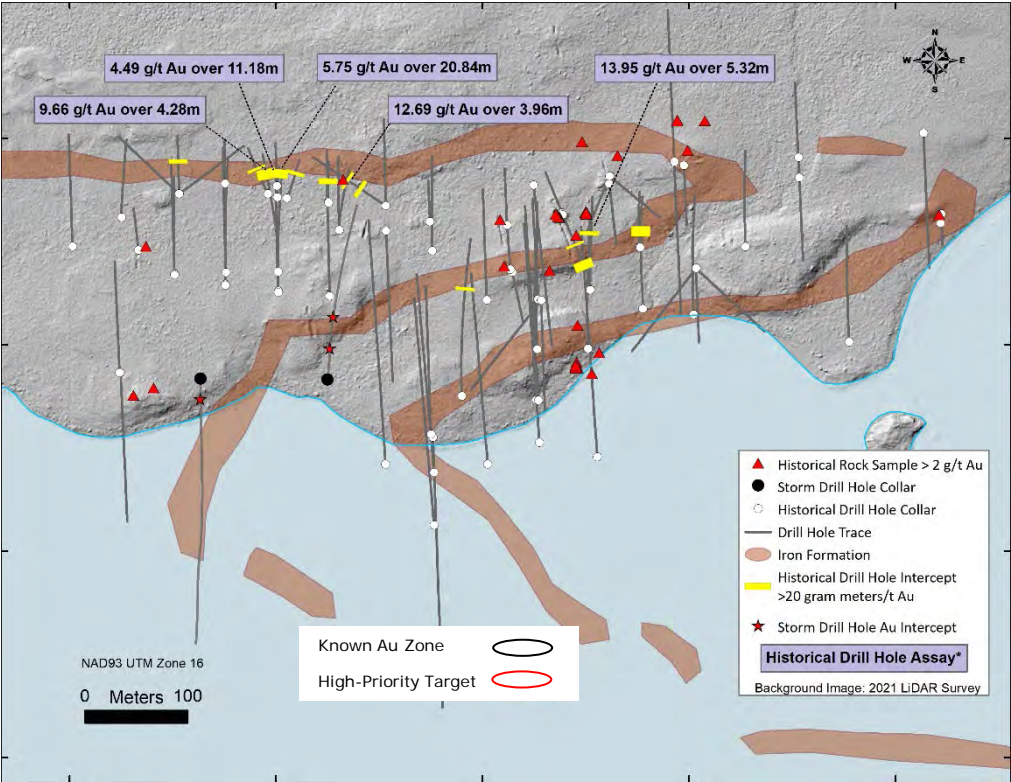
\* Historical results have not been independently verified by Storm Exploration; and, there is no guarantee that the Company can reproduce the results in whole or in part. Potential investors should not rely on these historical results when making an investment decision





# Miminiska Target

## Historical Work Provides a Solid Foundation



### Proven Gold Endowment

13,337m of historical drilling: 1944 to 2005

Historical resource estimate of 81.8koz Au\*

Primed for rapid expansion of the gold mineralization

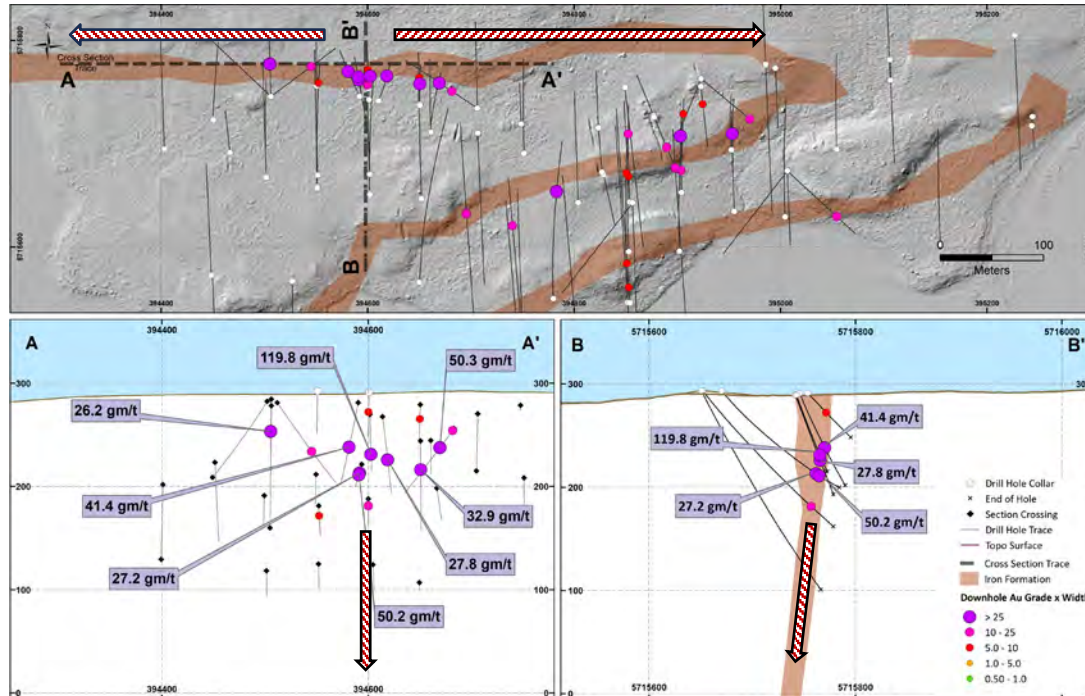
\* This historical mineral resource estimate is not compliant with the reporting requirements under NI 43-101.

Storm is not treating the historical estimate as current mineral resources (as defined in NI 43-101) and thus the historical estimate should not be relied upon.



# Miminiska Target

## Growing the Gold Inventory



### Next Steps

3,000m of drilling in Q1/2025 to expand gold mineralization along strike and down dip

### Drill Ready Target

Known gold zones ready for vertical expansion

Excellent potential to extend mineralization laterally along strike

- Historical gold bearing samples at surface
- Fold nose untested
- Geophysical signature similar to known gold zones

# Keezhik



## Multi-million Ounce Discovery Potential

Select historical results\*

Zone	Sample Type	Interval (m)	Au (g/t)
KL-12	Core	2.0	16.2
KL-12A	Core	0.6	47.7
KL-12B	Core	1.3	25.8
KL-18	Core	3.0	9.8

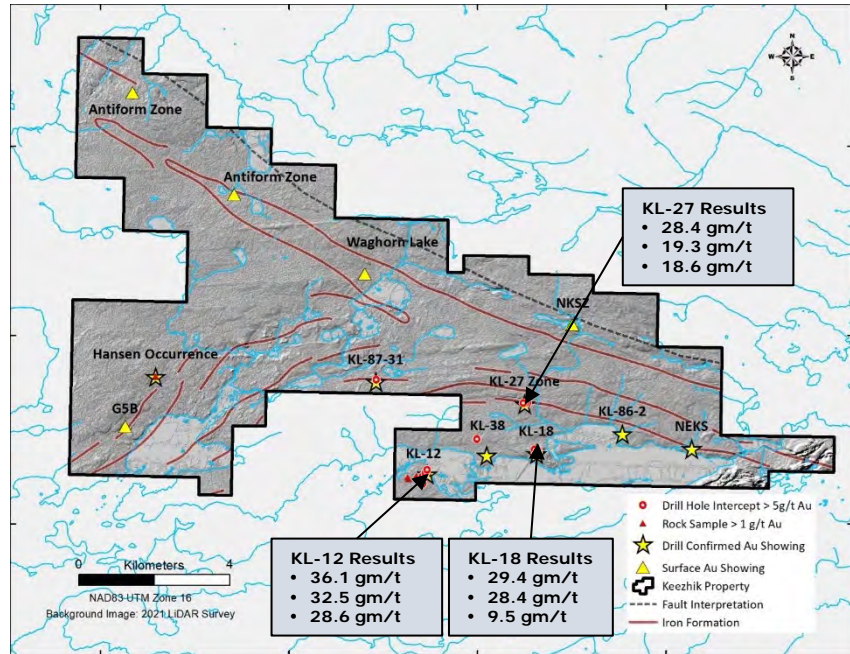
Numerous high-grade Au prospects  
 Limited exploration since 1980's

### Work Completed

- ✓ Airborne Mag & LiDAR surveys
- ✓ Geochemical sampling

### Next Steps

- Airborne EM survey
- Exploratory drilling



\* Historical results have not been independently verified by Storm Exploration; and, there is no guarantee that the Company can reproduce the results in whole or in part. Investors should not rely on these historical results when making an investment decision

# Acquisition Terms

Earning a 100% interest in Miminiska & Keezhik

## Table of Option Payments

Payment Date	Cash	Shares/Cash*
✓ On signing (6 <sup>th</sup> May 2021)	\$25,000	Nil
✓ 9 <sup>th</sup> July 2021	\$100,000	Nil
✓ 24 <sup>th</sup> December 2021	\$250,000	\$400,000
✓ 24 <sup>th</sup> June 2022	\$250,000	\$500,000
✓ 24 <sup>th</sup> January 2023	\$250,000	\$250,000
✓ 20 <sup>th</sup> September 2024	\$262,500	\$250,000
<b>20<sup>th</sup> March 2025</b>	<b>Nil</b>	<b>\$275,000</b>
<b>20<sup>th</sup> March 2026</b>	<b>\$525,000</b>	<b>\$787,500</b>

\*Storm can elect to make share payments in cash

Vendor retains a 2% Net Smelter Royalty. Storm can buy back 1% of the NSR at any time for \$1,000,000



# Experienced Leadership

## Management & Directors

Bruce Counts, <i>PGeo</i> :	President, CEO & Director
Dwight Walker, <i>CPA</i> :	CFO & Corporate Secretary
Lon Shaver, <i>CFA</i> :	Independent Director & CC Chair
Michael Sweatman, <i>CPA</i> :	Independent Director & AC Chair
Joanne Price <i>PGeo</i> :	Independent Director

## Advisors & Consultants

John Williamson:	Technical Advisor
Rahim Kassim-Lakha:	Capital Markets Advisor
Chief Harvey Yesno:	First Nations Advisor
Allison Rippin-Armstrong:	ESG Advisor



# Corporate Social Responsibility

Good corporate governance is critical to success. Storm seeks to foster investor, stakeholder and rights-holder confidence by adopting policies that ensure the highest level of corporate integrity and business ethics.

## First Nations

Storm has Exploration Agreements with **all first nations** in whose traditional territory it explores. We strongly believe that the participation of First Nations is essential to the success of any project.

This philosophy is reflected in a recent statement by Solomon Atlookan, Chief of the Eabametoong First Nation (EFN):

***“For far too long, exploration companies have sought to obtain permits before working collaboratively with First Nations. This agreement recognizes the role of our community in permitting, monitoring, and regulating any activities on the land. Storm has been very respectful in working with EFN and this approach should be a model for others to follow.”***



# Key Reasons to Invest

- ✓ Storm is exploring for multi-million-ounce gold deposits in NW Ontario
- ✓ Projects with extensive gold showings: drill-confirmed and high-grade
- ✓ Clear path to adding value in the near-term
- ✓ Attractive market capitalization ~\$2.6M
- ✓ Management & advisors have a track record of creating value through discovery
- ✓ Exceptional list of supportive shareholders



TSX-V: STRM



**STORM**  
EXPLORATION

## **Additional Projects**

Q3/2024



# Attwood



## Grassroots Property with Precious and Base Metal Potential

### Prospective Ground

100% owned project

No Royalty

No exploration since 1970's

Less than 20 historical drill holes

Within 5km of all-weather road

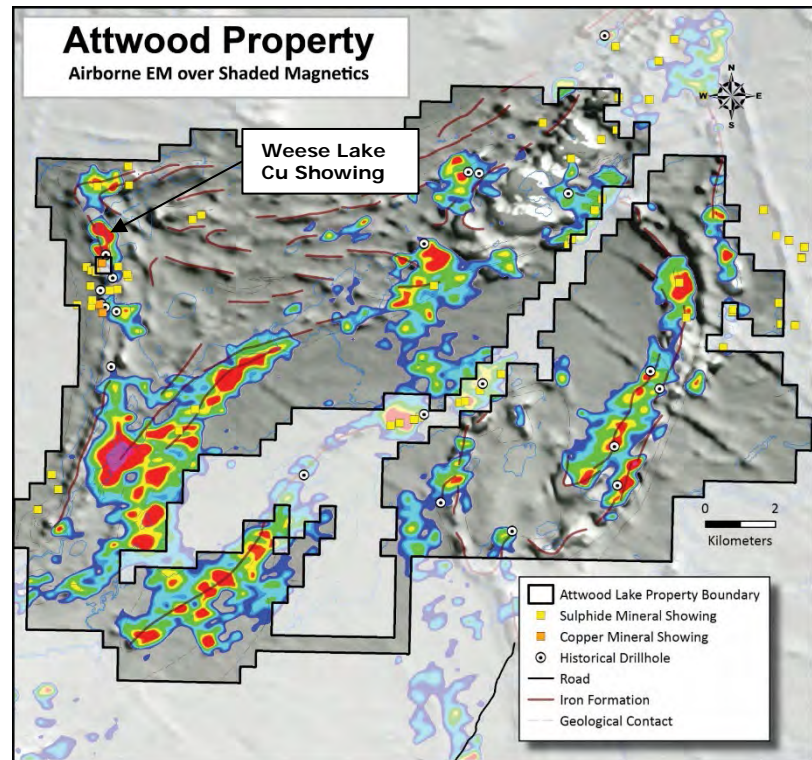
### Work Completed

✓ Airborne Mag & LiDAR surveys

### Next Steps

Prospecting / Soil Sampling

Exploratory drilling





# Gold Standard Property

## Early-Stage Property with a History of High-Grade Gold Production

### Worked by the Old Timers

Historical gold mining: 1900 - 1903

Reported mine grades of >50 g/t Au

Base metal exploration 1969 - 1971

### The Gold Opportunity

Three historical small-scale mines underscore prospectivity

Area of gold mining never drilled

### The Base Metal Opportunity

Extensive conductivity anomaly suggests large VMS system

Cu/Zn mineralization noted in historical drill-hole never assayed

Road accessible





# Gold Standard Property

## Early-Stage Property with a History of High-Grade Gold Production

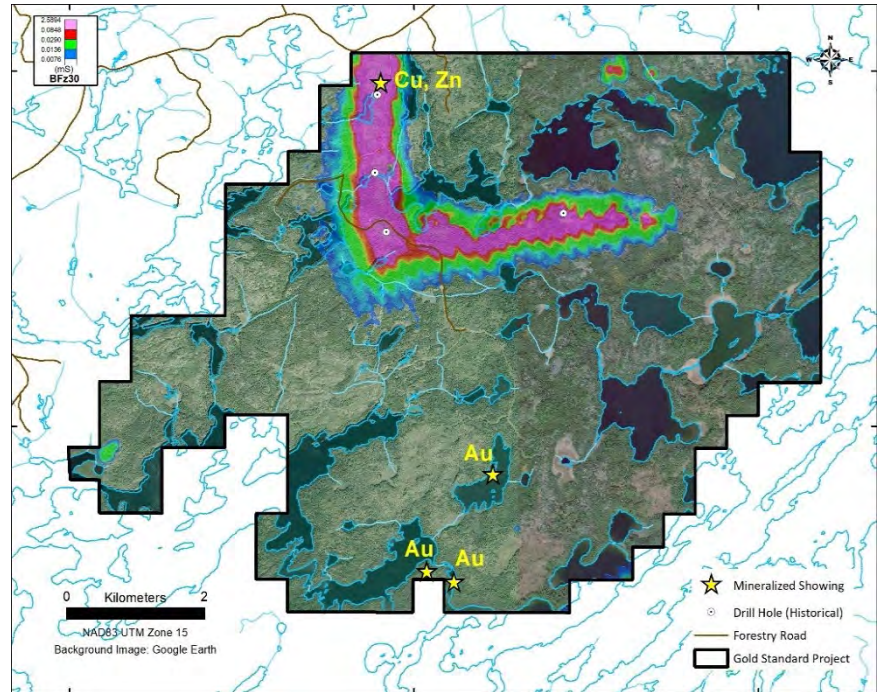
### Work Completed

- ✓ Assays up to **166 g/t Au** from grab samples collected from historical workings
- ✓ Geochemical samples collected over historical gold workings
- ✓ Detailed airborne EM survey completed over property
- ✓ MOU signed with Naicatchewenin & Nigigoonsiminikaaning First Nations

### Next Steps

VMS target definition

Exploratory drilling of VMS target





**STORM**  
EXPLORATION

[info@stormex.ca](mailto:info@stormex.ca)

+1 (604) 506-2804

**Stormex.ca**

**TSX-V: STRM**